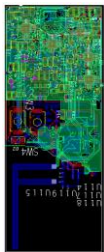


# Physiological Extraction Kits



LasLD



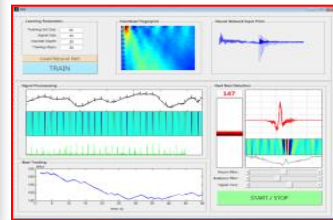
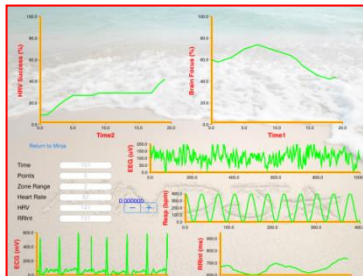
AccuXtract



AudioXtract



PatchKit





**LinearDimensions**  
SEMICONDUCTOR

"A very efficient, probably industry leading option for low power, leading edge, wearable and medical device development. Efficient meaning: Time, cost, size, power and more 'in there' ☺"

- **Physiological Enabling Kits:**

- AudioXtract – ECG/EEG Audio Headsets
- AccuXtract – ECG, IPG & PPG Bands
- LasLD – PPG Bands
- PatchKit – BioImpedance ECG Patch

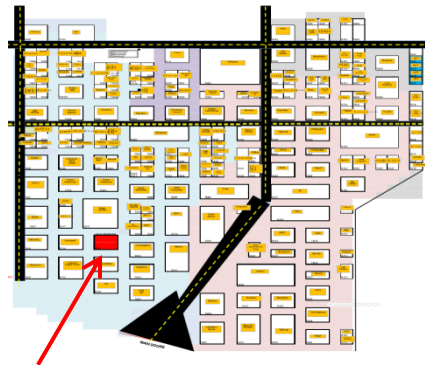
- John "Ivo" Stivorc, VP Jawbone

"Your fastest option for low power, leading edge, wearable and medical device development."

- **Features**

- Accelerometer (All Products)
- Heart Rate (All Products)
- ECG, EEG, Authentication, Sleep, Data Logging, microSD, microUSB, Sensor Hub, Non-Contact Sensors (Various)

- Fred Lisz, President Orbital Research



- **Software (iOS & PC)**

- All Bluetooth LE 3<sup>rd</sup> Party Apps
- Health Center
- Various Fitness & Monitoring Apps

**Join us at CES 2015 Booth #73314 –  
Digital Health Exhibit at the Sands**