



LinearDimensions
SEMICONDUCTOR

LND3465

30V BOOST DC/DC LED DRIVER

GENERAL DESCRIPTION

The LND3465 is a boost DC/DC LED Driver with internal 30V internal switch packaged in a space saving SOT23-6 package.

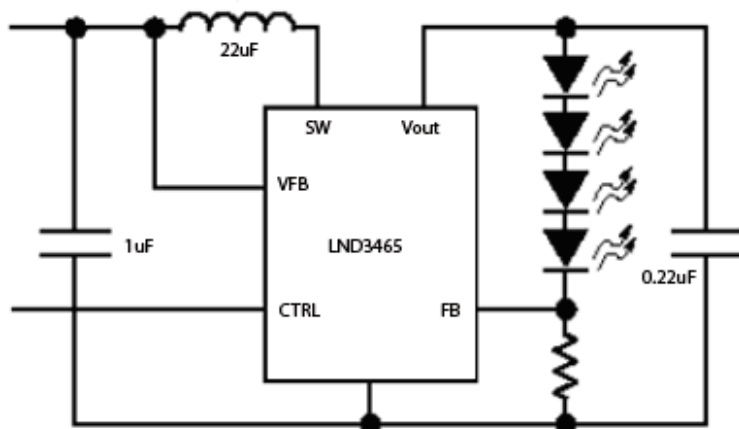
The LND3465 is all that is required to boost from supplies as low as 2.7V to a string of LEDs with a combined forward voltage of as much as 30V.

The LND3465 can drive a switch current up to 200mA, and switches at 1.2MHz allowing an extremely small inductor to be used. The device uses a low 200mV feedback voltage maximizing efficiency. No external schottky diode is required reducing component count.

The LND3465 includes a shutdown and dimming input that may be used for wide contrast dimming applications. Additional features include open LED protection and output voltage limiting if LEDs become disconnected.

The LND3465 operates over a $T_j = -40$ to 125°C temperature range.

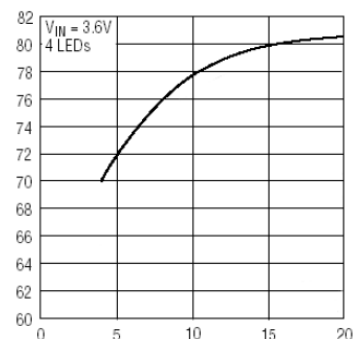
TYPICAL APPLICATION



FEATURES

- High Efficiency
- Low Cost
- 2.7 to 16V Vin
- Drives up to 30V Vf of LEDs
- No External Schottky Required
- Internal Switch
- Built in Soft Start
- Open LED Protection
- Up to 30V Output
- Dimming CTRL Pin for Wide Contrast Ratio Dimming
- 1.2MHz Switching Frequency Minimizes Inductor Size
- Small SOT23-6 Package

EFFICIENCY



APPLICATIONS

- Cellular Phone Backlights
- PDAs, Handheld Computers
- Digital Cameras
- MP3 Players
- GPS Receivers