



LinearDimensions
SEMICONDUCTOR

- **Integrated Wearables Chipsets:**

- AFEs: Mux, Filters, ADCs, Refs
- INAs: High CMRR, Motion Rejection
- REFs: 14 Channel in 3x2.2mm QFN
- Electrostatic Multichannel Drivers & Interfaces: 65V, 200V, 350V

- **Sensors:**

- **Optical PPG & Doppler:**

Proprietary lasing solutions reduce power & size vs. LED solutions for Heart Rate, O2. Also see our UV, Proximity, Ambient Light Soln's

- **Passive:** Ag-Ag-Cl Contact, Cu Non-Contact

- **Modules:**

- Watch/Band PPG & BioImpedance
- Headset – BLE Audio, ECG, BioImpedance
- Medical Patch – ECG, BioImpedance
- Custom IC + Sensor Assemblies

“A very efficient, probably industry leading option for low power, leading edge, wearable and medical device development. Efficient meaning: Time, cost, size, power and more ‘in there’ ☺”

- John “Ivo” Stivorc, VP Jawbone

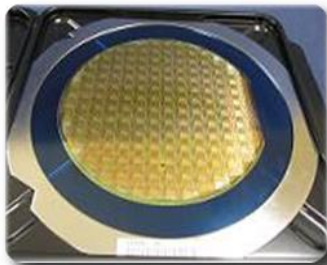
“A reliable IC development partner.”

- Helen Zunino, Project Leader Freescale

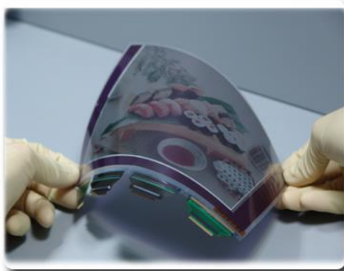


**Join us at CES 2015 Booth #73314 –
Digital Health Exhibit at the Sands**

Wearable & Medical Components



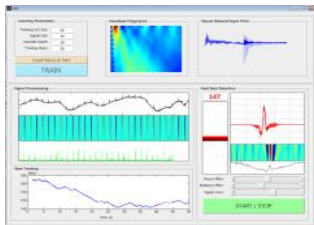
**AFEs, INAs, ADCs,
Programmable References,
SoC Systems**



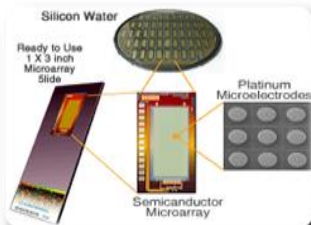
**"No Power" Displays &
Display Drivers**



**Sensors, Sensor
Drivers & Interfaces**



**Adaptive Extraction &
Security Software Modules**



Lab-On-Chip



**Band, Headset, Garment
& Patch Product Modules**